

### Intraligand Charge Transfer Spectrum of Biacetyl-bis-(mercaptoethylimine)-nickel(II)

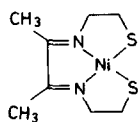
A. VOGLER\* and H. KUNKELY

Universität Regensburg, Institut für Anorganische Chemie  
D-8400 Regensburg, F.R.G.

Received June 24, 1981

Electronic transitions of coordination compounds are classified according to the origin of the orbitals involved in these transitions. Dependent on the metal, its oxidation state, and the nature of the ligands ligand-field (LF), metal-to-ligand-charge-transfer (MLCT), ligand-to-metal-charge-transfer (LMCT), and intraligand (IL) transitions may occur in mono-nuclear complexes. In mixed-ligand complexes ligand-to-ligand-charge-transfer (LLCT) transitions from one ligand to another are possible [1]. We report here our observation on a related but new type of electronic transition: intraligand-charge-transfer (ILCT), which is mediated by the central metal.

The complex biacetyl-bis(mercaptoethylimine)-nickel(II) (NiBE)



was prepared by Thompson and Busch in 1962 [2]. They also reported the impressive solvochromic behavior of this compound but without an explanation. During our recent work on LLCT spectra [1] we realized that the electronic structure of NiBE is related to that of  $M(II)(diimine)(1,2-dithiolate)$  with  $M = Ni$  [3] and  $Pt$  [1]. These complexes are also strongly solvochromic.

We suggest that the intense visible absorption band of NiBE (Fig. 1) which is responsible for the solvochromic behavior belongs to a sulfur-to-diimine ILCT transition within the tetradentate ligand, mediated by the nickel ion. Although attempts to prepare the free ligand  $BEH_2$  were not successful [2], the non-coordinated  $BEH_2$  is not expected to show the ILCT absorption since the sulfur atoms and the diimine unit are separated by electronically insulating

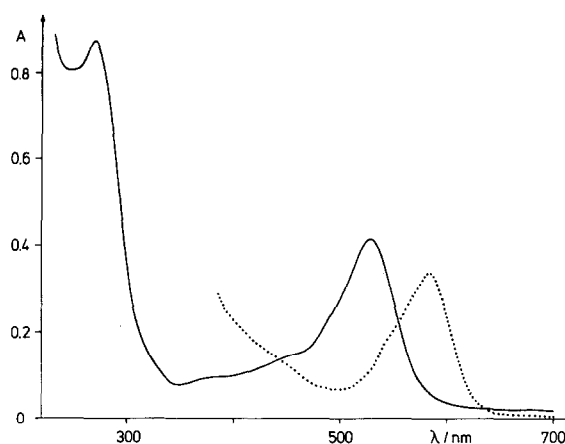


Fig. 1. Absorption spectrum of  $2.73 \times 10^{-4} M$  NiBE in  $CH_3CN$  (solid line) and of  $6.75 \times 10^{-5} M$  in  $CCl_4$  (dotted line); 1 cm cell.

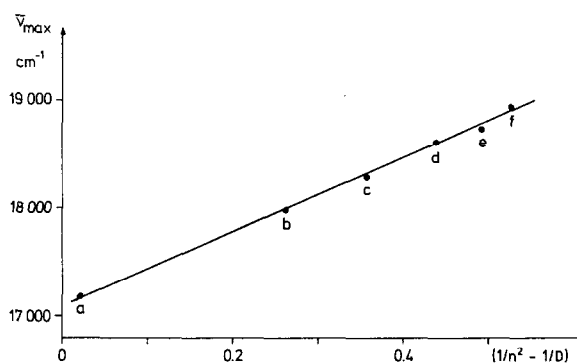


Fig. 2. Solvent dependence for the ILCT band of NiBE; a: Carbontetrachloride, b: Chlorobenzene, c: Pyridine, d: Dimethylsulfoxide, e: Acetone, f: Acetonitrile.

$-CH_2-CH_2-$  groups. Only the metal mediates then the ILCT interaction.

The solvent dependence of the ILCT band of NiBE is in accordance with an equation derived by Hush for intervalence transitions [4]. The energy at the band maximum  $\bar{\nu}_{max}$  is proportional to  $(1/n^2) - (1/D)$  where  $n^2$  and  $D$  are the optical and static dielectric constants of the solvent (Fig. 2).

A MLCT transition from Ni(II) to the diimine component of  $BE^{2-}$  as origin of the solvochromic behavior can be excluded. Such an absorption band should occur at much higher energies due to the resistance of Ni(II) towards oxidation. Accordingly, diiminenickel(II) complexes as  $[Ni(II)(biacetyl-$

\* Author to whom correspondence should be addressed.

bisanil)<sub>2</sub>]<sup>2+</sup> [5] do not display long-wavelength MLCT bands in their absorption spectra.

#### Acknowledgements

Financial support for this research by the Deutsche Forschungsgemeinschaft and the Fonds der Chemischen Industrie is gratefully acknowledged.

#### References

- 1 A. Vogler and H. Kunkely, *J. Am. Chem. Soc.*, **103**, 1559 (1981); and ref. cited therein.
- 2 M. C. Thompson and D. H. Busch, *J. Am. Chem. Soc.*, **84**, 1762 (1962); **86**, 213 (1964).
- 3 T. R. Miller and I. G. Dance, *J. Am. Chem. Soc.*, **95**, 6970 (1973).
- 4 N. S. Hush, *Progr. Inorg. Chem.*, **8**, 391 (1971).
- 5 A. L. Balch and R. H. Holm, *J. Am. Chem. Soc.*, **88**, 5201 (1966).