

# Frequent *LPA* KIV-2 Variants Lower Lipoprotein(a) Concentrations and Protect Against Coronary Artery Disease



Johanna F. Schachtl-Riess, MSc,<sup>a</sup> Azin Kheirkhah, MSc,<sup>a</sup> Rebecca Grüneis, MSc,<sup>a</sup> Silvia Di Maio, MSc,<sup>a</sup> Sebastian Schoenherr, PhD,<sup>a</sup> Gertraud Streiter, BSc,<sup>a</sup> Jamie Lee Losso, BSc,<sup>a</sup> Bernhard Paulweber, MD,<sup>b</sup> Kai-Uwe Eckardt, MD,<sup>c,d</sup> Anna Köttgen, MD, MPH,<sup>e</sup> Claudia Lamina, PhD,<sup>a</sup> Florian Kronenberg, MD,<sup>a,\*</sup> Stefan Coassin, PhD,<sup>a,\*</sup> for the GCKD Investigators†

## ABSTRACT

**BACKGROUND** Lipoprotein(a) (Lp(a)) concentrations are a major independent risk factor for coronary artery disease (CAD) and are mainly determined by variation in *LPA*. Up to 70% of the *LPA* coding sequence is located in the hyper-variable kringle IV type 2 (KIV-2) region. It is hardly accessible by conventional technologies, but may contain functional variants.

**OBJECTIVES** This study sought to investigate the new, very frequent splicing variant KIV-2 4733G>A on Lp(a) and CAD.

**METHODS** We genotyped 4733G>A in the GCKD (German Chronic Kidney Disease) study (n = 4,673) by allele-specific polymerase chain reaction, performed minigene assays, identified proxy single nucleotide polymorphisms and used them to characterize its effect on CAD by survival analysis in UK Biobank (n = 440,234). Frequencies in ethnic groups were assessed in the 1000 Genomes Project.

**RESULTS** The 4733G>A variant (38.2% carrier frequency) was found in most isoform sizes. It reduces allelic expression without abolishing protein production, lowers Lp(a) by 13.6 mg/dL (95% CI: 12.5-14.7; *P* < 0.0001) and is the strongest variance-explaining factor after the smaller isoform. Splicing of minigenes was modified. Compound heterozygosity (4.6% of the population) for 4733G>A and 4925G>A, another KIV-2 splicing mutation, reduces Lp(a) by 31.8 mg/dL and most importantly narrows the interquartile range by 9-fold (from 42.1 to 4.6 mg/dL) when compared to the wild type. In UK Biobank 4733G>A alone and compound heterozygosity with 4925G>A reduced HR for CAD by 9% (95% CI: 7%-11%) and 12% (95% CI: 7%-16%) (both *P* < 0.001). Frequencies in ethnicities differ notably.

**CONCLUSIONS** Functional variants in the previously inaccessible *LPA* KIV-2 region cooperate in determining Lp(a) variance and CAD risk. Even a moderate but lifelong genetic Lp(a) reduction translates to a noticeable CAD risk reduction. (J Am Coll Cardiol 2021;78:437-49) © 2021 The Authors. Published by Elsevier on behalf of the American College of Cardiology Foundation. This is an open access article under the CC BY license (<http://creativecommons.org/licenses/by/4.0/>).



Listen to this manuscript's audio summary by Editor-in-Chief Dr. Valentin Fuster on JACC.org.

From the <sup>a</sup>Institute of Genetic Epidemiology, Department of Genetics and Pharmacology, Medical University of Innsbruck, Innsbruck, Austria; <sup>b</sup>First Department of Internal Medicine, Paracelsus Private Medical University, Salzburg, Austria; <sup>c</sup>Department of Nephrology and Hypertension, Friedrich-Alexander Universität Erlangen-Nürnberg, Erlangen, Germany; <sup>d</sup>Department of Nephrology and Medical Intensive Care, Charité-Universitätsmedizin Berlin, Berlin, Germany; and the <sup>e</sup>Institute of Genetic Epidemiology, Faculty of Medicine and Medical Center, University of Freiburg, Freiburg, Germany. \*Drs Kronenberg and Coassin contributed equally to this work. †A full list of GCKD investigators and their affiliations appears in the [Supplemental Appendix](#). The authors attest they are in compliance with human studies committees and animal welfare regulations of the authors' institutions and Food and Drug Administration guidelines, including patient consent where appropriate. For more information, visit the [Author Center](#).

Manuscript received April 14, 2021; revised manuscript received May 11, 2021, accepted May 24, 2021.

## ABBREVIATIONS AND ACRONYMS

- apo(a)** = apolipoprotein(a)  
**bp** = base pair(s)  
**CAD** = coronary artery disease  
**GWAS** = genome-wide association study  
**KIV-2** = kringle IV type 2  
**LMW** = low molecular weight  
**Lp(a)** = lipoprotein(a)  
**pLi** = probability of being intolerant for loss-of-function variants (score)  
**SNP** = single nucleotide polymorphism

The lipoprotein(a) (Lp(a)) trait is a major riddle. Lp(a) has several proinflammatory, proatherogenic and potentially also prothrombotic properties (1) and has been associated with cardiovascular diseases, including coronary artery disease (CAD), heart failure, aortic valve stenosis, peripheral artery disease, stroke, and cardiovascular and total mortality (2,3). Although recent findings point toward oxidized phospholipids as a major determinant of Lp(a) pathogenicity inducing inflammation of the vascular wall (4-6), many details of both the pathophysiology and especially the genetic regulation of Lp(a) are still unclear.

SEE PAGE 450

Individual Lp(a) concentrations present a 1,000-fold concentration range in the general population, and median concentrations differ by nearly 10-fold between ethnicities (7) and 2- to 3-fold even within Europe (8). Unlike other lipoproteins, which show a highly polygenic genetic architecture, >90% of the Lp(a) variance is controlled by 1 gene, *LPA*, which encodes apolipoprotein(a) (apo(a)) (9). The gene structure of *LPA* is complex, and most of the coding sequence is not accessible for conventional sequencing or genotyping technologies. *LPA* has a highly repetitive structure consisting of 10 highly homologous kringle IV (KIV) domains (subtypes 1 to 10), a kringle V domain and a protease domain (9). The kringle IV type 2 (KIV-2) domain is encoded in a 5.6-kilobase large DNA copy number variation that can be present up to >40× per allele and creates >40 protein isoforms (9). The isoform size is inversely (but not linearly) correlated with the Lp(a) concentrations with carriers of low molecular weight (LMW) isoforms (11-22 KIV repeats) presenting 5× to 10× higher median Lp(a) concentrations than carriers of high molecular weight isoforms (>22 repeats) (9). Interestingly, whereas 1 LMW allele is commonly sufficient to cause increased Lp(a) concentrations, the Lp(a) concentrations of 2 individuals with the same isoform combination can still differ 200-fold (10). Indeed, in nearly every isoform group individuals with either very high or very low Lp(a) values are found. This means that besides the KIV size polymorphism other genetic variants exist that have a strong influence on Lp(a) concentrations.

We have recently performed a comprehensive mutation screening of the KIV-2 region by deep sequencing in individuals with a discrepancy between observed and expected Lp(a) values based on

the apo(a) isoform size (11). This revealed the splice site variant *LPA* KIV-2 4925G>A with a 22% carrier frequency and a high impact on Lp(a) concentrations. It occurs specifically in LMW isoforms, reduces Lp(a) by 30 mg/dL, and decreases protein expression without leading to a null allele (11). It explained some part of several peculiar aspects of the Lp(a) trait (9) and exemplified how investigation of variants located in the poorly covered KIV-2 region can provide novel insights into the genetics of the Lp(a) trait (11).

In the same sequencing data set (11), we noted a second variant, named here *LPA* KIV-2 4733G>A. It was located only 11 base pairs (bp) before the splice acceptor of the second exon of a KIV-2 repeat and was seen in 49 of 123 samples. The variant is located in the potentially functional region preceding the splice site acceptor and preliminary analyses in those 43 carriers had indicated an effect on Lp(a) (12). In the present study we investigate this variant and its functional consequences on Lp(a) concentrations and CAD risk in several large cohorts. We found that it is the second strongest genetic contributor to Lp(a) variance besides the KIV size polymorphism and shows a protective effect on cardiovascular outcomes in UK Biobank.

## METHODS

**VARIANT TYPING.** The nonstandard naming of the variant is caused by the complexity of the KIV-2 region (rationale detailed in the [Supplemental Methods](#)). Possible genome coordinates are given in [Supplemental Table 1](#). The 4733G>A variant was typed using an allele-specific polymerase chain reaction strategy described recently (13) with minor changes. Positive amplification does not differentiate between homozygous and heterozygous carriers. Carrier status was thus recorded as binary variable (carrier vs noncarrier). Details on the assay establishment and conditions are given in the [Supplemental Methods](#) and in [Supplemental Table 2](#). *LPA* KIV-2 4925G>A carrier status was available from previous projects (11,13).

**STUDY DESCRIPTION.** The GCKD (German Chronic Kidney Disease) study is an ongoing prospective cohort study comprising 5,217 White patients with moderately severe chronic kidney disease. The design has been described previously (14). Study characteristics are given in the [Supplemental Methods](#) and in [Supplemental Table 3](#). The study was approved by the ethics committees of all participating institutions and registered in the national registry for clinical studies

(DRKS 00003971). Data for 4733G>A were available for 4,907 participants. Lp(a) isoforms and KIV-2 variant data on 4733G>A and 4925G>A were available from 4,673 participants. Genotypes for rs10455872, rs41272114, and rs3798220 were available for 4,578 of these. Informed consent was obtained from all participants. All studies were performed in accordance with the Declaration of Helsinki.

**LP(A) PHENOTYPING.** Lp(a) concentrations and apo(a) isoforms were determined by a well-established enzyme-linked immunosorbent assay and by Western blot, respectively ([Supplemental Methods](#)). All Western blots were inspected by the same researcher. In heterozygous individuals isoform 1 denotes the smaller (fewer KIV repeats than isoform 2) and isoform 2 the larger apo(a) isoform (more KIV repeats than isoform 1) observed on the Western blot. The relative contribution of isoform 1 to the total blot signal was quantified visually, providing a semiquantitative ranking of the relative expression levels. This defined the dominant isoform, which contributes 50% or more to the Western blot signal, and the nondominant isoform. In UK Biobank Lp(a) was quantified using a Randox AU5800 system (UK Biobank Data-Field 30790) (details in [Supplemental Methods](#)).

#### **PUBLIC DATA SETS AND THE 1000 GENOMES PROJECT.**

We tested 66 single nucleotide polymorphisms (SNPs) by chi-square test for correlation with 4733G>A carrier status. The SNPs comprised all independent genome-wide significant proxy SNPs of the LPA gene region from our recent genome-wide association study (GWAS) (combined list from Supplemental Tables 6 and 8 from Mack et al [15]) that were represented in the Haplotype Reference Consortium-imputed data set (n = 64), plus rs3798220 and rs10455872. Linkage disequilibrium measures were assessed using the R package genetics, assuming that all 4733G>A carriers were heterozygous (details on selection of the proxy SNP in [Supplemental Methods](#)). The proxy SNP rs75692336 was used to tag KIV-2 4925G>A as assessed in Coassin et al (11).

The Type 2 Diabetes Knowledge Portal (16) was used to query the phenome effects of the proxy SNP for 4733G>A. The effect of carrying both 4733G>A and 4925G>A on CAD was assessed in UK Biobank with age-as-time-scale Cox proportional hazards regression using the proxy SNP combination rs75692336 (for 4925G>A) and rs6938647 (for 4733G>A) (UK Biobank application 62905). CAD was defined according to van der Harst et al (17) (ICD-10 codes I21-I25). Analyses were restricted to Whites. Details on survival analysis

and assessment of the 1000 Genomes Project populations are available in the [Supplemental Methods](#).

**MINIGENE ASSAY.** We generated LPA-pSPL3 minigenes containing the wild type and the 4733G>A mutation as described previously (11). The minigene vector contains both KIV-2 exons, the intron between them plus 475 bp and 621 bp flanking sequence ([Supplemental Figure 1](#)). Technical details and in silico predictions are given in the [Supplemental Methods](#).

**STATISTICAL METHODS.** Because the distribution of Lp(a) is highly skewed, quantile regression, modeling the conditional median of Lp(a), was used to test the association of 4733G>A, 4925G>A, and the combined carrier status with Lp(a) values (using R package quantreg) (18). To derive the proportion of explained variance ( $r^2$ ), linear models were applied on inverse normally transformed Lp(a) levels. Relative importance of the covariates was assessed with the R package relaimpo (19) (pmvd metric). It calculates  $r^2$  of all individual covariates based on weighted averaging over sequential  $r^2$  values. The sum adds up to the total  $r^2$  of the model. One thousand bootstrapping runs were used to calculate the CIs. Pearson chi-square test was used to analyze frequency distributions. To compare Lp(a) values between 2 groups, the Wilcoxon test was used. The proxy SNP approach and survival analysis in UK Biobank are described in the section regarding public data sets.

## **RESULTS**

**ASSAY VALIDATION AND PERFORMANCE.** The allele-specific polymerase chain reaction assay (13) showed no amplification at 0% mutant fraction, while still clearly detecting mutation fractions as low as 0.5% ([Supplemental Figure 2](#)). This easily allows the detection of the mutation if it is only available in 1 of the maximal possible sum of 80 to 90 KIV-2 repeats ( $1/90 = 1.1\%$ ). It correctly confirmed all 59 GCKD samples in which 4733G>A carrier status had been determined previously by ultra-deep next-generation sequencing (23 positives and 36 negatives) (12). Genotyping success rate was 99.96%.

**LPA KIV-2 4733G>A IS ASSOCIATED WITH REDUCED LP(A) AND EXPLAINS 12% OF LP(A) VARIANCE.** We detected the KIV-2 4733G>A variant in 1,788 of 4,673 individuals (carrier frequency 38.26%). This corresponds to a minor allele frequency of 22.4% assuming Hardy-Weinberg equilibrium.

In a quantile regression analysis adjusted for age, sex, estimated glomerular filtration rate, and isoform 1, carrier status of 4733G>A was associated with

**TABLE 1** Quantile Regression Analysis Between 4733G>A Carrier Status and Lp(a) Levels

Model and Adjustment	$\beta$ (95% CI)	P Value	r <sup>2</sup> by Model/ 4733G>A <sup>a</sup>
1. Age, sex, eGFR, and isoform 1	-13.6 (-14.7 to -12.5)	<0.0001	0.392/0.096
2. As model 1 plus 4925G>A	-12.6 (-13.9 to -11.4)	<0.0001	0.461/0.119
3. As model 2 plus rs41272114	-12.7 (-13.9 to -11.4)	<0.0001	0.480/0.126
4. As model 3 plus rs10455872 and rs3798220	-8.8 (-9.7 to -8.0)	<0.0001	0.511/0.099

<sup>a</sup>Variance explained (r<sup>2</sup>) derived from linear model on inverse normal transformed Lp(a) concentrations.  
CI = confidence interval; eGFR = estimated glomerular filtration rate; Lp(a) = lipoprotein(a).

13.6 mg/dL (95% CI: 12.5-14.7 mg/dL) lower Lp(a) concentrations and explained 9.6% of Lp(a) variance ( $P < 0.0001$ ) (Table 1). Addition of the carrier status of the high impact variant KIV-2 4925G>A (11) as a further covariate refined the effect to 12.6 mg/dL lower concentrations (95% CI: 11.4-13.9 mg/dL;  $P < 0.0001$ ) and increased the Lp(a) variance explained by KIV-2 4733G>A to 11.9%. The complete regression model explained 46.1% of Lp(a) variance (Table 1). Further inclusion of the null allele rs41272114 (20) increased the explained variance of the model to 48.0% without blunting the effect and the variance explained by 4733G>A (Table 1). Rs41272114 occurs in a similar isoform range ( $\approx 27$ -33 KIV) (13) and thus could have been the causal variant underlying the association signal of 4733G>A. For comparison, another high impact KIV-2 variant (4925G>A) (11) shows a stronger effect ( $\beta = -22.6$  mg/dL) but explains only 4% to 7% of the Lp(a) variance in the population caused by the lower carrier frequency and restriction to isoforms 19 to 25 (Supplemental Table 4). Addition of LPA SNPs rs10455872 and rs3798220 (21) reduced the effect of 4733G>A to  $-8.8$  mg/dL because these SNPs tag small isoforms with high Lp(a).

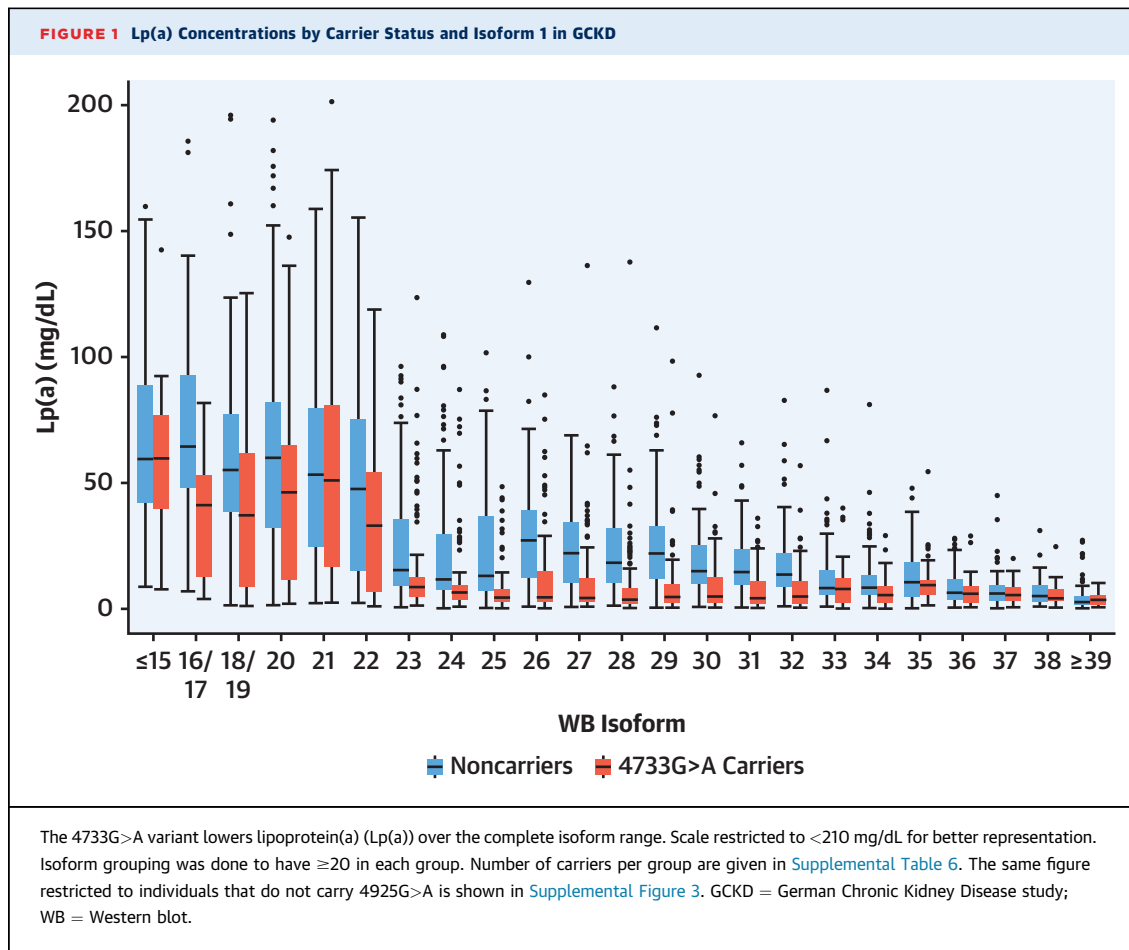
KIV-2 4733G>A provided the second strongest relative contribution to the total r<sup>2</sup> of the model besides the apo(a) isoform 1 followed by 4925G>A, rs10455872, rs3798220, and rs41272114 (Supplemental Table 5).

**VARIANT 4733G>A IS FOUND PREDOMINANTLY IN MEDIUM TO LARGE ISOFORMS.** KIV-2 4733G>A was observed in almost all isoform sizes and lowers Lp(a) in all isoform groups (Figures 1 and 2, Supplemental Table 6), but it shows some preferential association with alleles 24 to 33 KIV repeats (Figure 2). Exclusion of carriers of 4925G>A did not change the results (Supplemental Figure 3). Supplemental Figure 4 illustrates how the expression behavior of the apo(a)

isoforms is influenced by the 4733G>A variant. As expected, in noncarriers expressing 2 apo(a) isoforms the smaller isoform (isoform 1) was commonly also the dominant isoform (ie, more abundant) (Supplemental Figure 4B). Conversely, in 4733G>A carriers the proportion of smaller isoforms that are also the dominant ones was significantly reduced (54.2% vs. 80.5%;  $P < 0.0001$ ) (Supplemental Figures 4B and 4C), resulting in a switch of the isoform dominance in many individuals. This effect was most evident in isoforms 24 to 33. This suggests that 4733G>A lowers the expression of the allele on which it is located. Accordingly, isoform-specific Lp(a) concentrations are reduced in carriers (Supplemental Figure 5). Additionally, we noted a clear preponderance of individuals expressing only 1 isoform in plasma in the 4733G>A carriers vs noncarriers (58.7% vs 40.9%;  $P < 0.0001$ ). This may indicate that 4733G>A lowers expression to values below the detection limit when 4733G>A occurs on an already lowly expressing allele.

**MODIFICATION OF SPLICING IN VITRO.** The 4733G>A variant is located 11 bp upstream of the second KIV-2 exon in the intronic AG-exclusion zone (22). Bioinformatic predictions concordantly propose the generation of a novel splice acceptor 1 bp downstream of 4733G>A while abolishing the wild-type acceptor site (Supplemental Table 7). The LPA-pSPL3 minigene used in Coassin et al (11) (Supplemental Figure 1) recapitulated precisely the bioinformatic predictions, abolishing the wild-type splice site and creating 2 new splicing patterns (Figure 3, Supplemental Figures 6-8). It caused a 9-bp intron retention (splice site 2 in Supplemental Figure 8; splice product 1 in Figure 3) adding Ala-Ile-Ser-Ser between the KIV-2 exons (including the last exonic triplet) and increased the use of a cryptic splice acceptor located 24 bp in the exon following 4733G>A. This deletes 8 amino acids, including a KIV-2 structure-determining cysteine (Figure 3, splice site 3 in Supplemental Figure 8, splice product 2 in Figure 3). The latter product was present at a minor level in the wild-type constructs but was enhanced in the mutant ones (Supplemental Figure 6).

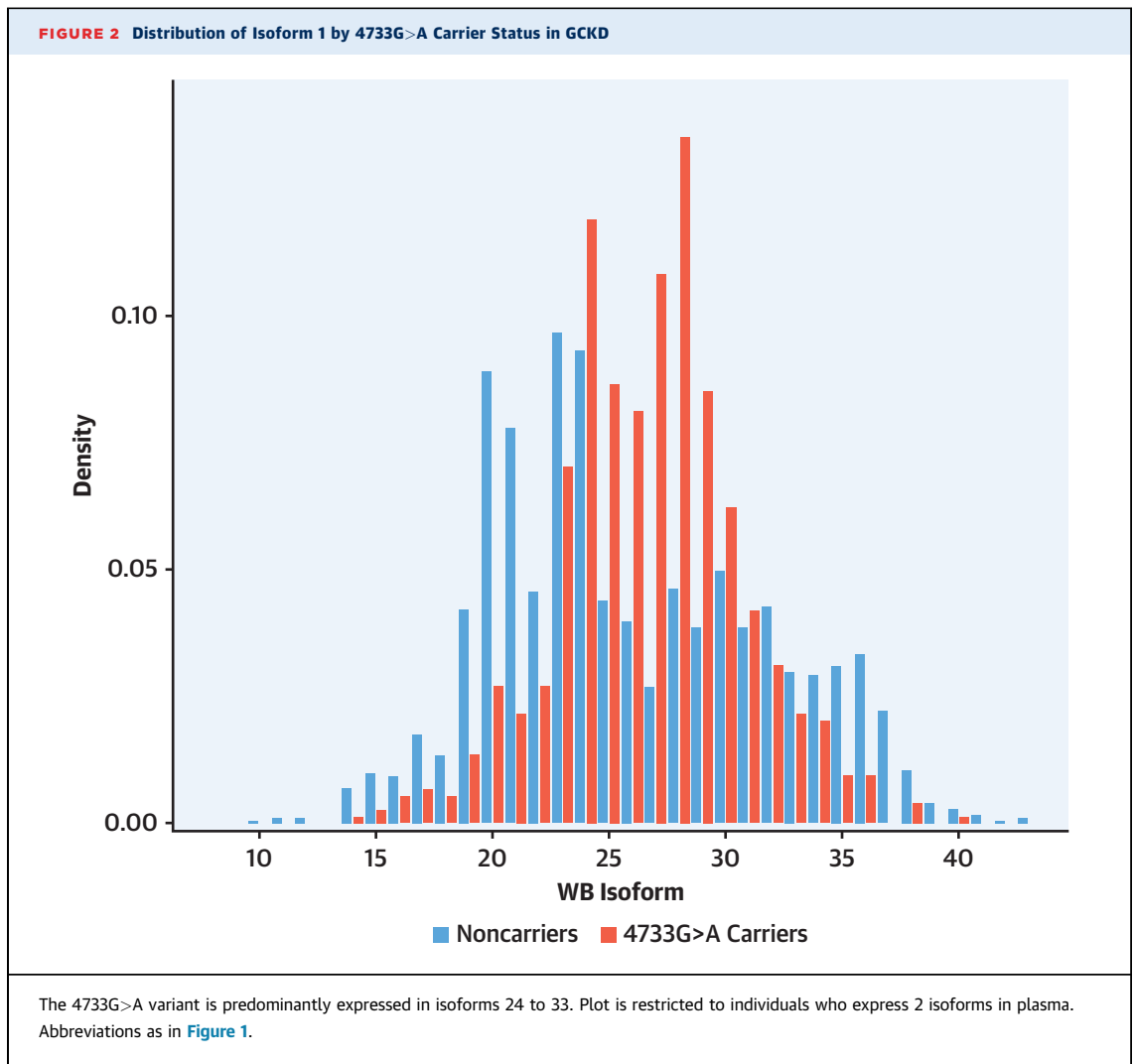
**LPA KIV-2 4733G>A AND 4925G>A JOINTLY INDUCE VERY LOW LP(A) CONCENTRATIONS.** A total of 216 GCKD participants (4.6%) carried both KIV-2 4733G>A and KIV-2 4925G>A (11) (Supplemental Table 8). Both SNPs independently lower Lp(a) (Figure 4A, Table 2), but still present a considerable range of Lp(a) values, mostly caused by the contribution of the second nonmutated allele (Figure 4A). In contrast, individuals carrying both variants show a similar



median Lp(a) as individuals carrying only 4733G>A or 4925G>A, but with almost no Lp(a) variability left (Figure 4A), indicating that the SNPs are likely located in trans and blunt both alleles (but without causing null alleles). Such a compound heterozygosity reduces Lp(a) over the complete range of isoforms (Figure 4B, Central Illustration). In a regression analysis adjusted for age, sex, and isoform 1, double carrier status was associated with a Lp(a) reduction of 31.8 mg/dL (95% CI: 30.2-33.3 mg/dL;  $P < 0.0001$ ). This was still a reduction of 17.5 mg/dL (95% CI: 16.0-18.8 mg/dL;  $P < 0.0001$ ) compared with that of noncarriers for both variants after additional adjustment for rs10455872, rs3798220, and rs41272114 (Table 2).

**ASSOCIATION WITH REDUCED RISK IN UK BIOBANK.** The location of 4733G>A (and 4925G>A) in the KIV-2 prevents the lookup of their impact in public data sets. We therefore screened the hits of our recent GWAS (15) on Lp(a) for linkage disequilibrium with 4733G>A (Supplemental Table 9). This approach has

previously successfully identified rs75692336 as proxy for 4925G>A (11). The search for the best proxy SNP for 4733G>A is described in the Supplemental Table 10 and revealed rs6938647 ( $D' = 0.931$ ,  $r^2 = 0.682$ ). This proxy SNP (minor allele frequency of 21.0% in CARDIoGRAMplusC4D-UK Biobank) showed highly significant association with CAD in a recent meta-analysis of the CARDIoGRAM and UK Biobank data (17) ( $n = 547,261$ ) and resulted in a 7.4% (95% CI: 6.0%-8.7%) lower CAD risk ( $P < 0.0001$ ). The effect of carrying 4733G>A, 4925G>A and compound heterozygosity on prospective CAD risk was assessed by Cox regression in UK Biobank ( $n = 440,234$ ) using the proxy combination rs75692336 (for 4925G>A) and rs6938647 (for 4733G>A). Effect size on Lp(a) concentration in UK Biobank and GCKD study was similar (Supplemental Figure 9, Figure 4A). As shown previously (11), 4925G>A alone did not reduce CAD risk in the whole population, because its effect is restricted to LMW carriers. In contrast, compared with noncarriers of both proxy SNPs, carriers of 4733G>A had a



9% lower risk of CAD in the survival analysis (HR: 0.91; 95% CI: 0.89-0.93;  $P < 0.001$ ) and compound heterozygotes of 4733G>A and 4925G>A had a 12% lower risk of CAD (HR: 0.88; 95% CI: 0.84-0.93;  $P < 0.001$ ) (Figure 5A, Central Illustration). As expected from previous publications (23,24), the proxy SNPs were not significantly associated with CAD risk anymore, when the analysis was adjusted for the Lp(a) concentration (Figure 5B).

**ALLELE FREQUENCY SHOWS ETHNIC DIFFERENCES.** We assessed its frequency in our recent catalog of genetic variation in the KIV-2 (12) in the 1000 Genomes Project. The 4733G>A variant was found in the European, Latin American (Admixed American), and South Asian continental groups, whereas it was not detected in East Asians and was very rare in Africans (Supplemental Tables 11-13). The carrier frequency

varies considerably from 1.5% in Africans to 35.1% Europeans. Among the African populations, it was indeed observed only in populations with some potential of admixture (African Caribbeans in Barbados and Americans of African Ancestry in the Southwestern United States).

## DISCUSSION

Whereas important progress has been made recently in understanding the Lp(a)-mediated cardiovascular risks (1,2), the details of its genetic regulation and especially the mechanisms underlying its variance are still largely unclear. The 200-fold range observed within the same isoform size groups indicates that genetic variants may modulate the impact of the apo(a) isoforms but very few are known. Because the KIV-2 can encompass a large portion of coding

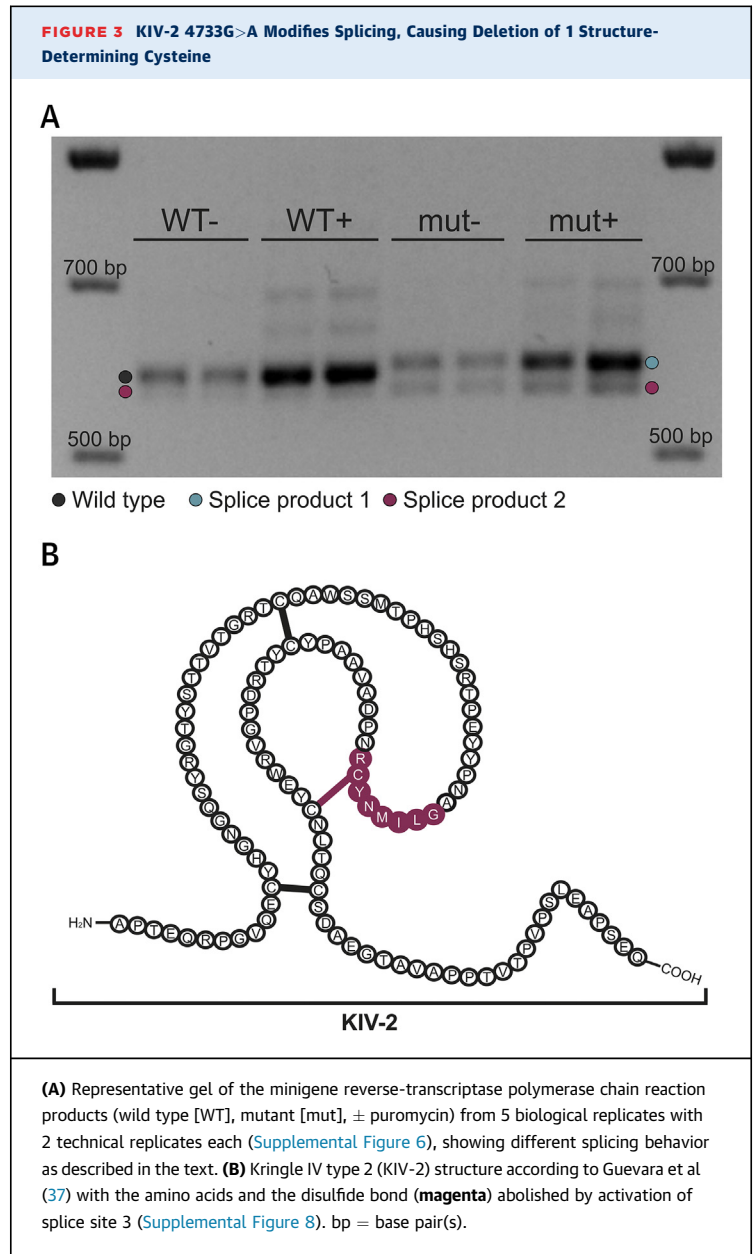


sequence (up to 70%), it may contain several functional variants missed so far. The recently described variant *LPA* KIV-2 4925G>A is such a variant and explains some peculiarities of the Lp(a) trait, but it is restricted to a rather narrow isoform range (11).

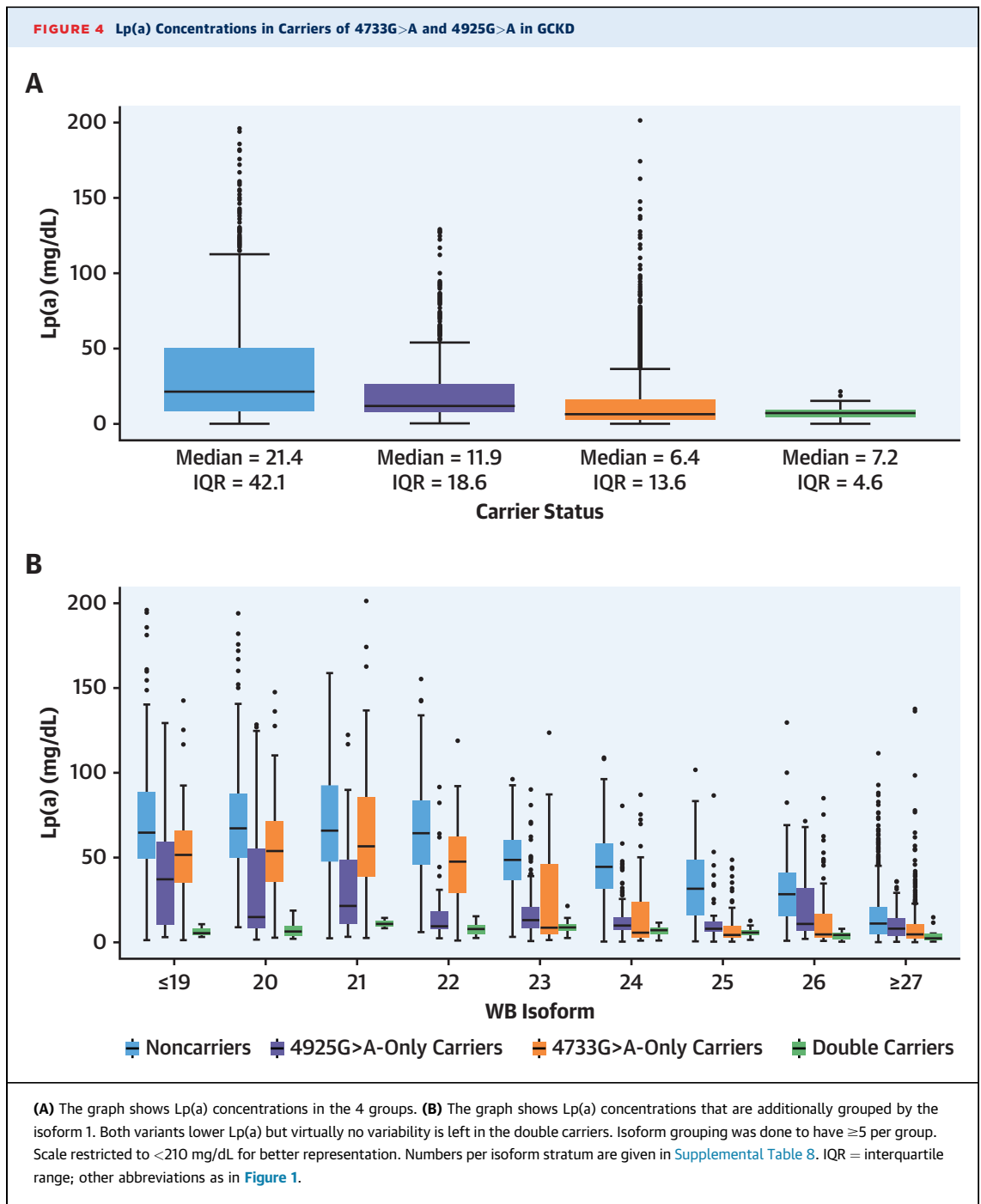
In this work we have identified a second very frequent KIV-2 variant (named 4733G>A). It is present in nearly 40% of the population but has not been investigated in detail earlier because of its previously inaccessible location in the KIV-2 repeat. It is associated with 13.6 mg/dL lower Lp(a) and, because of its very high frequency, it explains ≈10% of Lp(a) variance, making it the strongest determinant of Lp(a) concentrations besides the apo(a) isoform size.

The 4733G>A variant is found in nearly every isoform size, albeit with some preponderance in isoforms 24 to 33. Of note, we observed a switch in the dominant isoform patterns in the Western blots of 4733G>A carriers (explained in Supplemental Figure 4). This provides a molecular basis for the long-standing reports about exceptions in the dominance of the shorter isoforms in Western blots and suggests that the expression of the allele carrying 4733G>A is reduced. Accordingly, in silico predictions, location of the variant in the AG-exclusion zone region, and in vitro experiments concordantly propose that 4733G>A modulates splicing. By creating a new AG dinucleotide in the AG-exclusion zone, 4733G>A creates a new splice acceptor. Interestingly, both aberrations caused by 4733G>A create in-frame proteins, but the deletion abolishes 1 disulfide bond that creates the kringle structure. The Lp(a) reduction may thus be caused by altered secretion, folding, and/or processing of the protein. Similar effects have been recently shown for missense variants in *LPA* (25).

A very heterogeneous picture for the causes of the large variability of Lp(a) concentrations in the population emerges where several genetic variants—including modifiers of *LPA* expression, loss-of-function alleles (both reviewed in Schmidt et al (20)), splicing modification (11) and even missense variants impairing secretion (25)—independently modify Lp(a) concentrations. Based on variation patterns from >100,000 genomes, the GnomAD project (26) assigns a “probability of being intolerant for [loss-of-function] variants” (pLi) score (27) of 0 for *LPA*. This pLi score uses the ratio of observed vs expected protein-truncating mutations in ≈126,000 exomes to infer the tolerance of a given gene for the occurrence of loss-of-function mutation. The low pLi score might suggest that at least the lower part of the Lp(a) concentration range observed for each isoform might be caused by multiple lesions acting together.



Accordingly, 4733G>A/4925G>A compound heterozygotes, compared with the wild types, have on average 31.8 mg/dL lower Lp(a) concentrations and a 9-fold narrower interquartile range (42.1 vs 4.6 mg/dL). It is tempting to speculate that different frequencies of such variants might contribute to the interethnic differences in Lp(a). Indeed, similar to many other Lp(a)-lowering variants (4925G>A [11], R21X [13], rs41272114 [13], rs3798220 [20]) 4733G>A presents pronounced interethnic frequency differences. More genome data about non-White individuals are required to deepen these findings.



**CLINICAL IMPLICATIONS.** Besides providing novel insights in the architecture of the Lp(a) trait, our findings have relevant clinical implications as shown in the **Central Illustration**. We show that the lifelong 13.6 mg/dL Lp(a) reduction associated with 4733G>A is associated with a significant decrease in CAD risk of 9% in a Cox regression analysis in UK Biobank. This suggests that lifelong exposure to even moderately

reduced Lp(a) is associated with a detectable decrease in cardiovascular disease risk. This might even be an underestimation because this could be assessed only via an incomplete proxy SNP because variants in the KIV-2 region are not well captured by common genome-wide data. However, almost 90% of all proxy SNP carriers were also carriers of 4733G>A, providing a good estimate of the effects of 4733G>A itself.



Importantly, the effect estimate for the compound heterozygosity of 4733G>A and 4925G>A might be attenuated because only about 76% of proxy haplotype carriers also carried both variants.

Another open question in clinical interpretation of Lp(a) is whether the isoform size provides any additional risk beyond the Lp(a) concentrations. After adjustment for the Lp(a) concentration, the carrier status for 4733G>A and 4925G>A was not significantly associated with CAD risk anymore. This indicates that their effect on CAD risk is mediated by the Lp(a) concentration, which is in line with previous publications (23,24). A differential effect of apo(a) isoforms has been discussed for cardiovascular disease risk in renal patients (28) and load of oxidized phospholipids (4). Also in diabetes research the impact of the isoform size per se rather than the Lp(a) concentrations is an ongoing discussion (29,30). The 4925G>A variant, which lowers Lp(a) selectively in LMW isoforms, has been used recently elegantly as an instrument to disentangle the Lp(a) concentrations from isoform size in a large Icelandic cohort (24). Given its high frequency, 4733G>A will be an even stronger instrument to further tackle this unresolved clinically very relevant question. Finally, we are now on the dawn of therapeutic inactivation of atherogenic genes by somatic gene editing, which could potentially provide a true single shot intervention for high-risk individuals (31-35). In the past decade, human genetics has been used to validate drug targets (36). In an analogous way, very frequent Lp(a)-lowering variants may represent safe targets to be mimicked by therapeutic gene editing.

**STUDY STRENGTHS AND LIMITATIONS.** We have designed a robust assay for a variant in the largely unaddressed KIV-2 region, which makes up most of the LPA coding sequence, and we used the data not only to assess the impact on Lp(a) but also to provide proxy SNPs that are contained in GWAS data. Using large public data sets of CARDIoGRAMplusC4D and UK Biobank, we show a clear impact on CAD risk, underscoring the importance of even minor but lifelong Lp(a) reduction, and using the 1000 Genomes Project, we show that the genotypes of 4733G>A can be directly extracted from available sequence data, allowing replication and extension of our findings by others. Our study is limited by the complex linkage disequilibrium patterns in LPA. We assessed the linkage disequilibrium with all hits of our recent GWAS on Lp(a), but clearly we cannot completely rule out that a linkage disequilibrium with other unknown functional variants may account for some of the observed effects. However, we

**TABLE 2** Quantile Regression Analysis of the Double Carrier Status (4733G>A and 4925G>A) on Lp(a) Concentrations

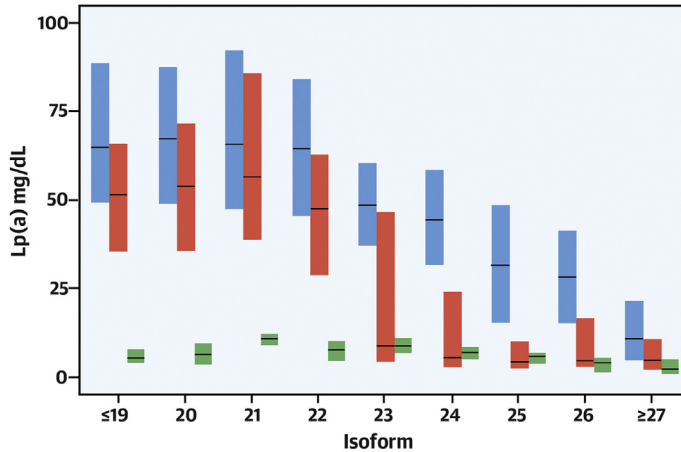
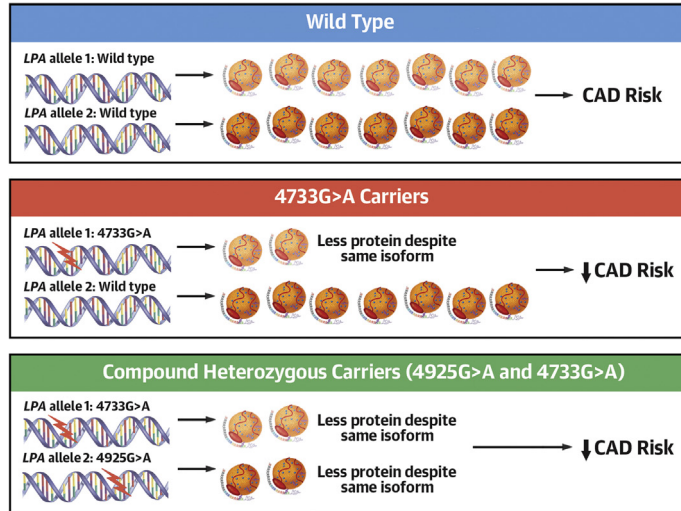
Carrier Status 4733G>A/4925G>A	n	β (95% CI)	P Value	r <sup>2</sup> by Model/Carrier Status <sup>a</sup>
<b>Model 1. Adjusted for age, sex, eGFR, and isoform 1</b>				
Yes/yes	216	-31.8 (-33.3 to -30.2)	<0.0001	0.462/0.165
Yes/no	1,572	-16.5 (-17.6 to -15.3)	<0.0001	
No/yes	724	-26.6 (-28.3 to -25.0)	<0.0001	
<b>Model 2. Adjusted as in model 1 plus rs41272114</b>				
Yes/yes	216	-32.2 (-33.7 to -30.7)	<0.0001	0.480/0.172
Yes/no	1,572	-16.4 (-17.6 to -15.2)	<0.0001	
No/yes	724	-26.8 (-28.3 to -25.3)	<0.0001	
<b>Model 3. Adjusted as in model 2 plus rs3798220 and rs41272114</b>				
Yes/yes	216	-17.5 (-18.8 to -16.0)	<0.0001	0.512/0.117
Yes/no	1,572	-10.9 (-11.9 to -9.8)	<0.0001	
No/yes	724	-13.2 (-14.6 to -11.9)	<0.0001	
Carrier status refers to the presence (yes) or absence (no) of the 2 variants (given as 4733G>A/4925G>A). Noncarriers of both variants make up the reference group. <sup>a</sup> Variance explained (r <sup>2</sup> ) derived from linear model on inverse normal transformed Lp(a) concentrations. Abbreviations as in Table 1.				

see the effect of 4733G>A in all isoform groups, it is not markedly modified by other SNPs and the splicing assays show a clear impact that matches bioinformatics predictions. We recognize that the allele-specific polymerase chain reaction strategy cannot differentiate homozygous and heterozygous carriers limiting exact estimation of effect size. We acknowledge that we inferred the allelic location of 4733G>A rather than determining it directly, because selecting a few carriers for pulsed-field electrophoresis-based assessment, as was done recently (11,13), would not be meaningful, given the high frequency of the variant. Finally, we are aware that our association results are limited to individuals of European ancestry and replication studies in populations of different ancestry are warranted. Our results from the 1000 Genomes Project may hopefully guide such studies.

## CONCLUSIONS

We describe a novel putative splicing modulator in LPA that is the second strongest genetic effect on Lp(a) variance, at least in a White population. It provides insights in the genetic architecture behind the large variance of Lp(a) and highlights how even moderate lifelong reductions in Lp(a) concentration results in a clinical benefit.

**CENTRAL ILLUSTRATION** Frequent *LPA* KIV-2 Variants Lower Lipoprotein(a) and Coronary Artery Disease Risk

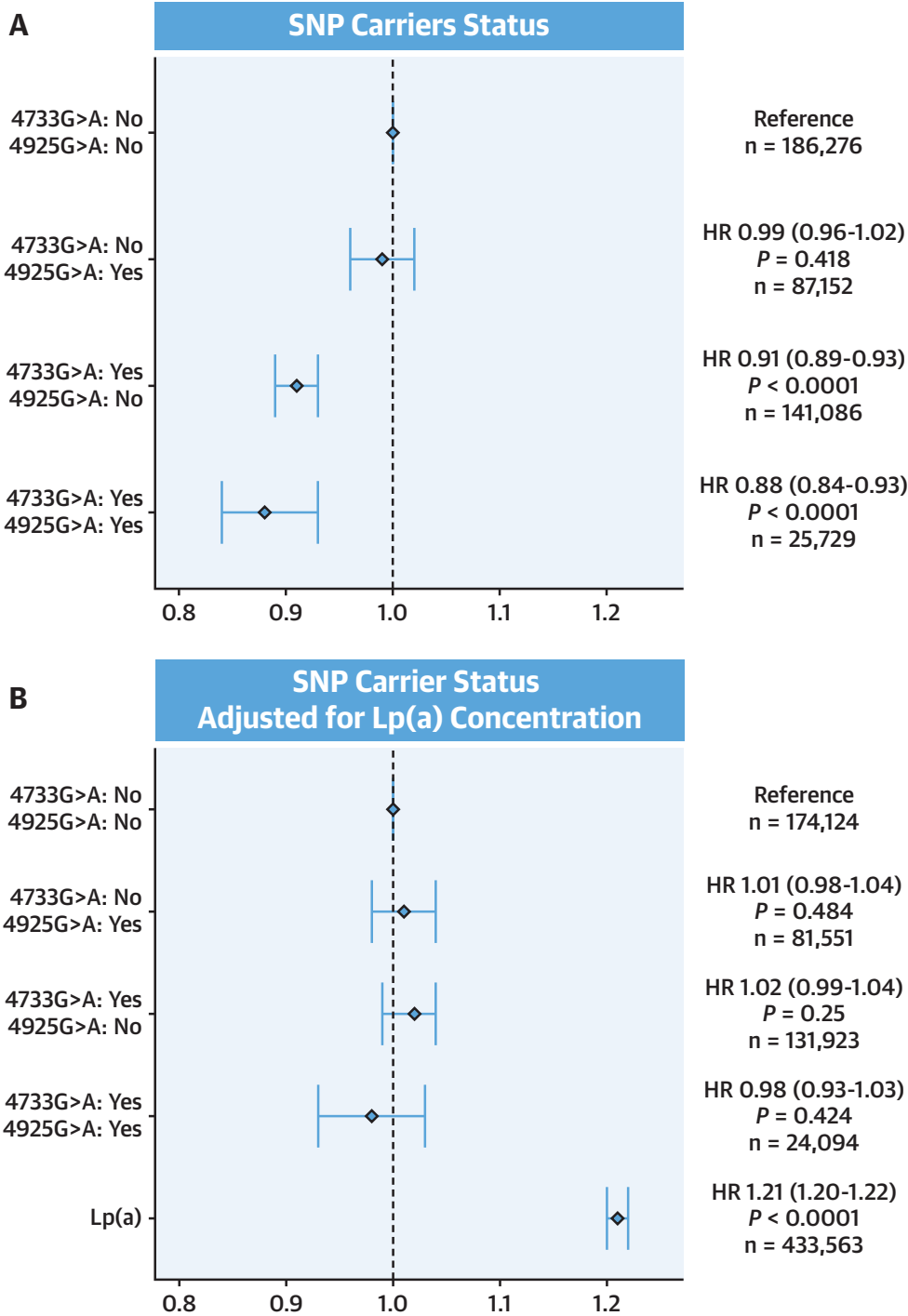


Variable	N	Hazard Ratio for CAD in UK Biobank (95% CI)	p
4733G>A: No 4925G>A: No	186,276	Reference	
4733G>A: No 4925G>A: Yes	87,152	0.99 (0.96, 1.02)	0.4
4733G>A: Yes 4925G>A: No	141,086	0.91 (0.89, 0.93)	<0.0001
4733G>A: Yes 4925G>A: Yes	25,729	0.88 (0.84, 0.93)	<0.0001

Schachtl-Riess, J.F. et al. J Am Coll Cardiol. 2021;78(5):437-49.

The frequent *LPA* kringle IV type 2 (KIV-2) variant 4733G>A and compound heterozygosity for 4733G>A and 4925G>A are associated with lower lipoprotein(a) (Lp(a)) concentrations and a lower risk for coronary artery disease (CAD).

**FIGURE 5** HR for CAD Risk in UK Biobank



**(A)** Model is adjusted for sex. **(B)** Model is adjusted for sex and inverse-normal transformed lipoprotein(a) (Lp(a)) concentration. Plot is restricted to individuals with Lp(a) measurements available. Status refers to the presence (yes) or absence (no) of the proxy single nucleotide polymorphisms (SNPs) rs6938647/rs75692336 for 4733G>A/4925G>A. The noncarriers of proxy SNPs of both variants make up the reference group. Age is taken as time scale (model with time-on-study shown in Supplemental Figure 10). HR for Lp(a) concentration is given for a 1-unit increase of the inverse-normal transformed Lp(a) concentration. CAD = coronary artery disease.

**ACKNOWLEDGMENTS** The authors are grateful for the willingness of all study participants of the involved studies. The enormous effort of the study personnel of the various study centers is highly appreciated. The authors also thank Richard Hilbe and Ivan Tancevski (both with the Department of Internal Medicine II, Medical University of Innsbruck) for helpful troubleshooting and Georg Kern (Department of Physiology, Medical University of Innsbruck) for assistance with fluorescent microscopy. Drs Kronenberg and Coassin gratefully acknowledge the support of the Lipoprotein(a) Center And Research Institute [Lp(a)CARE] to their lipoprotein(a) research.

#### FUNDING SUPPORT AND AUTHOR DISCLOSURES

The study was supported by the Austrian Science Fund (FWF) project P31458-B34 and the D•A•CH Advancement Award Lipidology 2015 (supported by the Christine Katharine Schmitz Foundation) of the D•A•CH-Society for Prevention of Cardiovascular Diseases (to S.C.). The GCKD study is supported by the German Ministry of Education and Research (Bundesministerium für Bildung und Forschung, grants 01ER 0804, 01ER 0818, 01ER 0819, 01ER 0820, and 01ER 0821) and the KfH Foundation for Preventive Medicine (Kuratorium für Heimdiagnostik und Nierentransplantation e.V.-Stiftung Präventivmedizin) and corporate sponsors (see the GCKD website). Ms Schachtl-Riess has received support from the Dr Legerlotz Foundation. Dr Köttgen has received support from the German Research Foundation (grant KO 3598/5-1). Dr Kronenberg has received support from the Austrian Science Fund (project W-1253DK HOROS); has received lecture fees from Novartis, Amgen, and Kaneka; and has served on the advisory boards of Amgen and Kaneka. Drs Kronenberg and Coassin have

received support from the Lipoprotein(a) Center And Research Institute [Lp(a)CARE] for their lipoprotein(a) research. All other authors have reported that they have no relationships relevant to the contents of this paper to disclose.

**ADDRESS FOR CORRESPONDENCE:** Dr Florian Kronenberg, Institute of Genetic Epidemiology, Department of Genetics and Pharmacology, Medical University of Innsbruck, Schoepfstrasse 41, A-6020 Innsbruck, Austria. E-mail: [Florian.Kronenberg@i-med.ac.at](mailto:Florian.Kronenberg@i-med.ac.at). OR Dr Stefan Coassin, Institute of Genetic Epidemiology, Department of Genetics and Pharmacology, Medical University of Innsbruck, Schoepfstrasse 41, A-6020 Innsbruck, Austria. E-mail: [Stefan.Coassin@i-med.ac.at](mailto:Stefan.Coassin@i-med.ac.at). Twitter: [@KronenbergLab](https://twitter.com/KronenbergLab), [@StefanCoassin](https://twitter.com/StefanCoassin).

#### PERSPECTIVES

##### COMPETENCY IN MEDICAL KNOWLEDGE:

Frequently occurring variants in the *LPA* gene disassociate apo(a) isoforms from blood Lp(a) concentration, limit the predictive power of the apo(a) isoforms, and make Lp(a) concentrations a more accurate measure of coronary disease risk.

**TRANSLATIONAL OUTLOOK:** These variants that modify Lp(a) concentrations may represent novel therapeutic targets to reduce atherosclerotic risk.

#### REFERENCES

- Tsimikas S. A test in context: lipoprotein(a): diagnosis, prognosis, controversies, and emerging therapies. *J Am Coll Cardiol* 2017;69(6):692-711.
- Kronenberg F. Human genetics and the causal role of lipoprotein(a) for various diseases. *Cardiovasc Drugs Ther* 2016;30(1):87-100.
- Langsted A, Kamstrup PR, Nordestgaard BG. High lipoprotein(a) and high risk of mortality. *Eur Heart J* 2019;40(33):2760-70.
- Boffa MB, Koschinsky ML. Oxidized phospholipids as a unifying theory for lipoprotein(a) and cardiovascular disease. *Nat Rev Cardiol* 2019;16(5):305-18.
- van der Valk FM, Bekkering S, Kroon J, et al. Oxidized phospholipids on lipoprotein(a) elicit arterial wall inflammation and an inflammatory monocyte response in humans. *Circulation* 2016;134(8):611-24.
- Stiekema LCA, Prange KHM, Hoogeveen RM, et al. Potent lipoprotein(a) lowering following apolipoprotein(a) antisense treatment reduces the pro-inflammatory activation of circulating monocytes in patients with elevated lipoprotein(a). *Eur Heart J* 2020;41(24):2262-71.
- Enkhmaa B, Anuurad E, Berglund L. Lipoprotein(a): impact by ethnicity and environmental and medical conditions. *J Lipid Res* 2016;57(7):1111-25.
- Erhart G, Lamina C, Lehtimäki T, et al. Genetic factors explain a major fraction of the 50% lower lipoprotein(a) concentrations in Finns. *Arterioscler Thromb Vasc Biol* 2018;38(5):1230-41.
- Kronenberg F, Utermann G. Lipoprotein(a): resurrected by genetics. *J Intern Med* 2013;273(1):6-30.
- Perombelon YFN, Soutar AK, Knight BL. Variation in lipoprotein(a) concentration associated with different apolipoprotein(a) alleles. *J Clin Invest* 1994;93(4):1481-92.
- Coassin S, Erhart G, Weissensteiner H, et al. A novel but frequent variant in LPA KIV-2 is associated with a pronounced Lp(a) and cardiovascular risk reduction. *Eur Heart J* 2017;38(23):1823-31.
- Coassin S, Schönherr S, Weissensteiner H, et al. A comprehensive map of single-base polymorphisms in the hypervariable LPA kringle IV type 2 copy number variation region. *J Lipid Res* 2019;60(1):186-99.
- Di Maio S, Grüneis R, Streiter G, et al. Investigation of a nonsense mutation located in the complex KIV-2 copy number variation region of apolipoprotein(a) in 10,910 individuals. *Genome Med* 2020;12(1):74.
- Titze S, Schmid M, Kottgen A, et al. Disease burden and risk profile in referred patients with moderate chronic kidney disease: composition of the German Chronic Kidney Disease (GCKD) cohort. *Nephrol Dial Transplant* 2015;30(3):441-51.
- Mack S, Coassin S, Rueedi R, et al. A genome-wide association meta-analysis on lipoprotein(a) concentrations adjusted for apolipoprotein(a) isoforms. *J Lipid Res* 2017;58(9):1834-44.
- Type 2 Diabetes Knowledge Portal. <http://www.type2diabetesgenetics.org/>. Accessed September 16, 2020.
- van der Harst P, Verweij N. Identification of 64 novel genetic loci provides an expanded view on the genetic architecture of coronary artery disease. *Circ Res* 2018;122(3):433-43.
- Koenker R. quantreg: Quantile Regression. R package version 5.75. R Foundation, 2020.

19. Grömping U. Relative importance for linear regression in R: the package relaimpo. *J Stat Softw* 2006;17(1):1-27.
20. Schmidt K, Noureen A, Kronenberg F, Utermann G. Structure, function, and genetics of lipoprotein(a). *J Lipid Res* 2016;57(8):1339-59.
21. Clarke R, Peden JF, Hopewell JC, et al. Genetic variants associated with Lp(a) lipoprotein level and coronary disease. *N Engl J Med* 2009;361(26):2518-28.
22. Wimmer K, Schamschula E, Wernstedt A, et al. AG-exclusion zone revisited: lessons to learn from 91 intronic NF1 3' splice site mutations outside the canonical AG-dinucleotides. *Hum Mutat* 2020;41(6):1145-56.
23. Sandholzer C, Saha N, Kark JD, et al. Apo(a) isoforms predict risk for coronary heart disease: a study in six populations. *Arterioscler Thromb* 1992;12(10):1214-26.
24. Gudbjartsson DF, Thorgeirsson G, Sulem P, et al. Lipoprotein(a) concentration and risks of cardiovascular disease and diabetes. *J Am Coll Cardiol* 2019;74(24):2982-94.
25. Morgan BM, Brown AN, Deo N, et al. Nonsynonymous SNPs in *LPA* homologous to plasminogen deficiency mutants represent novel null apo(a) alleles. *J Lipid Res* 2020;61(3):432-44.
26. Karczewski KJ, Francioli LC, Tiao G, et al. The mutational constraint spectrum quantified from variation in 141,456 humans. *Nature* 2020;581(7809):434-43.
27. Lek M, Karczewski KJ, Minikel EV, et al. Analysis of protein-coding genetic variation in 60,706 humans. *Nature* 2016;536(7616):285-91.
28. Kronenberg F, Neyer U, Lhotta K, et al. The low molecular weight apo(a) phenotype is an independent predictor for coronary artery disease in hemodialysis patients: a prospective follow-up. *J Am Soc Nephrol* 1999;10(5):1027-36.
29. Lamina C, Kronenberg F. The mysterious lipoprotein(a) is still good for a surprise. *Lancet Diabetes Endocrinol* 2013;1(3):170-2.
30. Kamstrup PR, Nordestgaard BG. Lipoprotein(a) concentrations, isoform size, and risk of type 2 diabetes: a Mendelian randomisation study. *Lancet Diabetes Endocrinol* 2013;1(3):220-7.
31. King A. A CRISPR edit for heart disease. *Nature* 2018;555(7695):523-5.
32. Tromp TR, Stroes ESG, Hovingh GK. Gene-based therapy in lipid management: the winding road from promise to practice. *Expert Opin Investig Drugs* 2020;29(5):483-93.
33. Ding Q, Strong A, Patel KM, et al. Permanent alteration of PCSK9 with in vivo CRISPR-Cas9 genome editing. *Circ Res* 2014;115(5):488-92.
34. Chadwick AC, Evitt NH, Lv W, Musunuru K. Reduced blood lipid levels with in vivo CRISPR-Cas9 base editing of *ANGPTL3*. *Circulation* 2018;137(9):975-7.
35. Chadwick AC, Wang X, Musunuru K. In vivo base editing of PCSK9 (proprotein convertase subtilisin/kexin type 9) as a therapeutic alternative to genome editing. *Arterioscler Thromb Vasc Biol* 2017;37(9):1741-7.
36. Tybjaerg-Hansen A. Using human genetics to predict the effects and side-effects of drugs. *Curr Opin Lipidol* 2016;27(2):105-11.
37. Guevara J, Knapp RD, Honda S, Northup SR, Morrisett JD. A structural assessment of the apo [a] protein of human lipoprotein[a]. *Proteins* 1992;12(2):188-99.

---

**KEY WORDS** cardiovascular disease, cohort study, copy number variation, genetic variability, lipoprotein(a), Mendelian randomization

---

**APPENDIX** For supplemental methods, references, figures, and tables, please see the online version of this paper.